



# GMT MONTHLY MEMBERSHIP PROGRESS REPORT

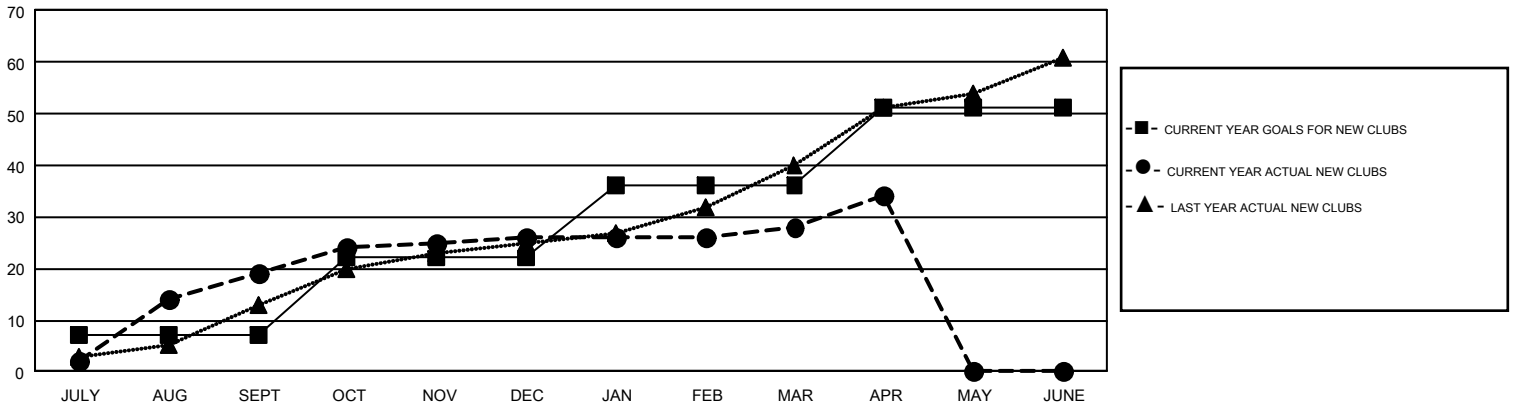
Results as of: 4/30/2019

## GAT Constitutional Area 7

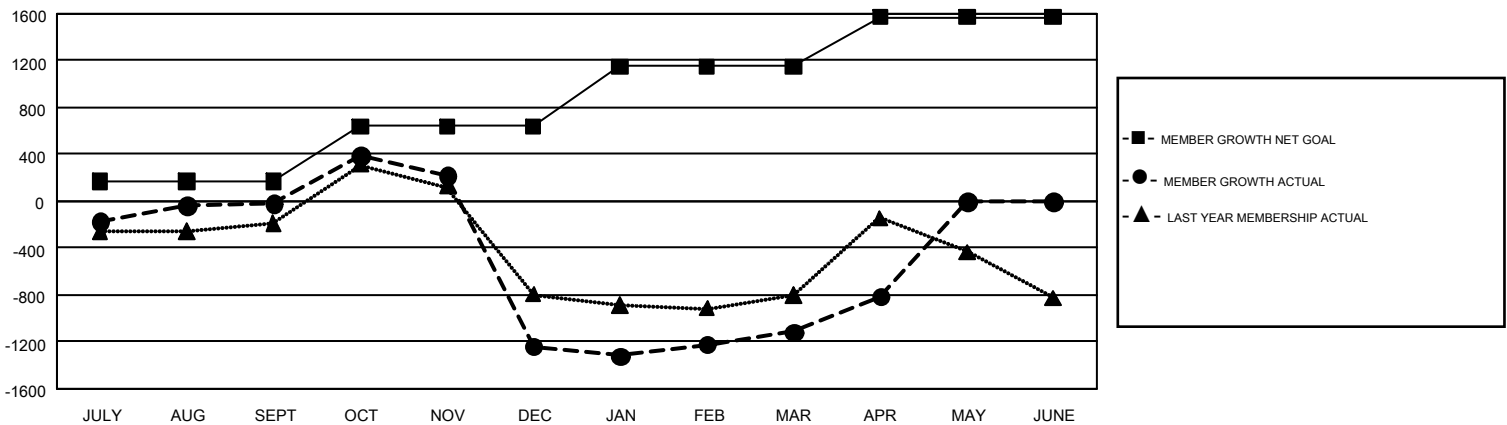
REPORT DOES NOT INCLUDE CLUBS IN UNDISTRICTED AREAS.

Clubs				Members			
RESULTS FOR 2018-2019				RESULTS FOR 2018-2019			
QUARTER	NEW CLUB GOAL	NEW CLUBS	DROPPED CLUBS	QUARTER	MEMBER GROWTH NET GOAL	MEMBER GROWTH ACTUAL	DROPPED MEMBERS ACTUAL (including transfers)
JULY/AUG/SEPT	7	19	27	JULY/AUG/SEPT	169	1,640	1,480
OCT/NOV/DEC	15	7	21	OCT/NOV/DEC	469	1,539	2,652
JAN/FEB/MAR	14	2	18	JAN/FEB/MAR	515	1,295	990
APR/MAY/JUNE	15	6	4	APR/MAY/JUNE	418	815	475

GOALS AND ACTUAL NEW CLUBS CUMULATIVE



GOALS AND ACTUAL MEMBERS CUMULATIVE



DROPPED CLUBS: 70	1,208 CLUBS OF 1,955 ADDED 1 OR MORE NEW MEMBERS	<u>GENDER DISTRIBUTION</u> MALE 27,680 (61.15%) FEMALE 17,589 (38.85%)
<u>DROPPED MEMBERS</u> DECEASED 374 CLUB CANCELLED 377 OTHER 4,840 <hr/> TOTAL 5,591	<a href="#">CLICK HERE FOR CUMULATIVE MEMBERSHIP DATA</a>	TOTAL FAMILY UNIT MEMBERS 7,420 FAMILY MEMBERS PAYING HALF DUES 3,873